



Performance Management of Priority Areas

The findings of the crime audit revealed a number of crimes and concerns that are significant issues to the people of Gloucester, and to the Partnership. In order to tackle these identified priorities in a co-ordinated way, various themes have been identified which encompass the relevant issues. This will give greater direction to agencies contributing to the crime reduction effort, and also ensure that the necessary links are made between different issues in a joined-up approach that attacks both the causes and the symptoms of crime. These themes are as follows:

- Reducing Anti-Social Behaviour
- Reducing Hate Crime
- Reducing Property Crime
- Reducing Substance Misuse
- Reducing Violent Crime

Within each thematic area, individual crimes and sources of concern will be considered and aims established. Within these aims, specific objectives will be set and then targets agreed for achievement by a certain date. The baseline against which progress will be measured will be the crime levels in Gloucester in 2003/04. Each theme will now be considered in turn, in alphabetical order.

Reducing Anti-Social Behaviour

Aim: To reduce anti-social behaviour in Gloucester

Objectives:

- To reduce levels of criminal damage and arson
- To tackle all anti-social behaviour in the city, including environmental crime and the anti-social use of vehicles
- To reduce the involvement of young people in crime, both as victims and offenders
- To contribute to the reduction of the fear of crime

Targets:

- To reduce the number of criminal damage offences by 26% by 2008
- To reduce the number of fires that have a doubtful cause by 25% by 2008
- To establish a baseline figure for speed in targeted residential areas of the city in Year One and then reduce that figure thereafter.
- To bring at least four offenders to justice for fly-tipping each year until 2008
- To reduce victimisation of young people by 15% by 2008
- To engage 175 young people as part of the Prevent and Deter initiative by 2008
- To reduce the percentage of people who see anti-social behaviour as a problem in their area by 5% by 2008
- To increase the number of people who feel their lives are not at all restricted by crime to 60% by 2008



Performance Management of Priority Areas

Reducing Hate Crime

Aim: To reduce crimes motivated by prejudice and hatred in Gloucester

Objectives:

- To reduce the number of racist incidents
- To increase detection levels for racially aggravated crimes
- To increase confidence in the criminal justice system amongst minority groups
- To reduce the fear of crime amongst minority groups

Targets:

- To ensure repeat racist incidents do not comprise more than 12% of the total of such incidents each year until 2008
- To achieve a sanction detection rate of 35% for racially aggravated crime
- To enhance confidence in the criminal justice system by establishing a baseline for reported levels of all hate crime in Year 1, and then increasing the number of reports in Years 2 and 3
- To establish an accurate baseline during Year 1 for the number of people amongst minority groups who believe hate crime to be a problem and then reduce this figure by 2008
- To increase the number of people who feel their lives are not at all restricted by crime to 60% by 2008

Reducing Property Crime

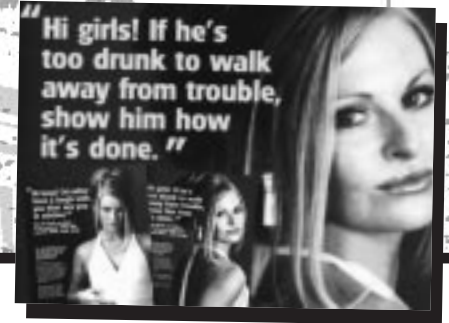
Aim: To reduce the crimes against property which most significantly affect Gloucester by 22.5% in line with local PSA Target 1

Objectives:

- To reduce levels of burglary
- To reduce levels of vehicle crime
- To reduce levels of theft of pedal cycles and theft by shoplifting
- To reduce levels of robbery
- To contribute to the reduction of the fear of crime

Targets:

- To reduce the number of dwelling burglaries by 17% by 2008
- To reduce the number of non-dwelling burglaries by 30% by 2008
- To reduce the number of thefts from vehicles by 25% by 2008
- To reduce the number of thefts of vehicles by 30% by 2008
- To reduce the number of thefts of pedal cycles by 32% by 2008
- To reduce the number of shoplifting offences in the city centre by 12% by 2008
- To reduce the number of personal robberies by 15% by 2008
- To increase the number of people who feel their lives are not at all restricted by crime to 60% by 2008



Performance Management of Priority Areas

Reducing Substance Misuse

Aim: To reduce the harmful effects of the misuse of drugs and alcohol in Gloucester

Objectives:

- To reduce drug-related offending
- To reduce alcohol-related offending
- To reduce the harmful effects to health of drug and alcohol misuse
- To contribute to the reduction of the fear of crime

Targets:

- To maintain effective management of 15 targeted problematic drug using offenders through the Prolific and Priority Offender Unit
- To detect 35 offences of Class 'A' drug supply each year until 2008
- To ensure that 12% of detainees in custody are assessed by a Drug Arrest Referral Worker each year
- Through a series of Gloucester-specific actions to contribute to the DAAT adult treatment plan target to increase the percentage of drug users who are retained in treatment for 12 weeks or more to 58% by 2008
- To establish a baseline figure for the number of other offences each year which are found to have been committed by individuals charged with Class 'A' drug possession, and to reduce that figure thereafter
- To ensure that at least one anti binge drinking campaign is established each year until 2008 to combat the effects of alcohol misuse in the city centre
- To reduce the number of people who feel alcohol abuse is a problem in their area to 50% by 2008
- To increase the number of people who feel their lives are not at all restricted by crime to 60% by 2008

Reducing Violence

Aim: To reduce levels of violence in Gloucester

Objectives:

- To reduce offences of violence against the person
- To reduce the levels of domestic violence
- To reduce violence associated with licensed premises in the city centre
- To contribute to the reduction of the fear of crime

Targets:

- To reduce the offences of violence against the person in line with national Public Service Agreements targets by 2008
- To ensure that repeat domestic incidents do not constitute more than 18% of total domestic incidents each year to 2008
- To reduce violent crimes that occur between 8pm and 6am in the city centre by 22.5% by 2008
- To increase the number of people who feel their lives are not at all restricted by crime to 60% by 2008